





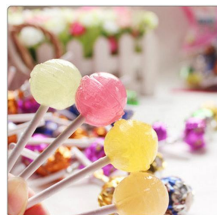


Ball Lollipop Production Line

Item No.	Item	Technical parameters	Unit price (CNY)	Quantity (set)	Amount (CNY)	Picture of item
1	100L Sugar cooking machine	<ol style="list-style-type: none"> 1. Capacity: 50-70kg/30min 2. Inner diameter: 700mm 3. Volume: 100L 4. Power: 15kw 5. Weight: 153kg 6. Dimension: 1400*1360*1400mm 7. Heating type: Electric heat conduction oil type 		1		
2	Cooling table (Iron)	<p>It is used to cooling the sugary liquor.</p> <ol style="list-style-type: none"> 1. Size: 1800*1000*600mm 2. Weight: 235kg 		1		
3	CY-98 Heat preservation Batch roller and rope sizer	<p>It is suitable for heat insulation and pulling of sugar pastes.</p> <ol style="list-style-type: none"> 1. Maximum capacity of batch roller: 0.18m³ 2. Total power: 6.3kw 3. Running speed: ≤25m/min 4. Weight: 720kg 5. Outer dimensions: 3700*800*1700mm 		1		

4	<p>CY-400 Ball Lollipop forming machine</p>	<p>It is suitable for producing various specifications of lollipops, such as: filled lollipops, spherical and taper lollipops</p> <ol style="list-style-type: none"> 1. Model: CY-400 2. Production capacity: 600-800Pcs/min 3. Lollipop weight: 6-18g/piece 4. Diameter: φ18-35mm 5. Total power: 3kw 6. Weight: 600kg 7. Dimensions: 1200*1200*1300mm 		1		
5	<p>Three layer cooling sifter</p>	<ol style="list-style-type: none"> 1. Total power: 0.75kw 2. Dimension: 2500*500*600mm 3. Weight: 90kg 		1		
6	<p>CY-840 Ball lollipop twist packaging machine</p>	<ol style="list-style-type: none"> 1. Production capacity: 120-130pcs/min 2. Lollipop diameter: φ 18-30mm 3. Total power: 2.1kw 4. Weight: 840kg 5. Dimension: 2500*900*1500mm 6. Packaging materials: BOPP/CPP, PET/CPP and other heat sealable materials. 		1		



Note:

- 1) **Payment terms: 30% T/T advance after order, 70% T/T before delivery.**
- 2) **Delivery time: 40 days from receipt of down payment.**
- 3) **Package: wooden case.**
- 4) **Supervision of Installation & Commissioning of the plant**

The Supplier Send One or two Technical Personnel To Carry Out The Supervision Work Of The Installation, Commissioning Of The Plant And Training Of The Operator For A Period Of About 15 Days. Purchaser Has To Bear The Cost Of Air Ticket for double journey, Food & Lodging & Visa For The Personnel. In addition, Buyer Needs To Pay A Daily Allowance of USD100.00 Per Technician As Pocketing Money During Their Staying in Buyer's Area.

- 5) **Guarantee for quality: The Supplier Has Agreed To Provide 12 Months Guarantee Period From The Date Of Supply (Delivery Date).**
-
-